

Hellinikon SA | role

Since its establishment, the role of Hellinikon SA was the call for **expression of interest**

For the proper completion of the expression of interest are needed:

1. Evaluation of all Existing Uses
2. Topographic Survey in detail
3. Definition of Building Regulations
4. Spatial Mode Implication



Hellinikon SA | role

Since its establishment, the role of Hellinikon SA was the call for **expression of interest**

For the proper completion of the expression of interest are needed:

1. Evaluation of all Existing Uses

- short term
- long term
- no agreement

2. Topographic Survey in detail

3. Definition of Building Regulations

4. Spatial Mode Implication



Hellinikon SA | role

Since its establishment, the role of Hellinikon SA was the call for **expression of interest**

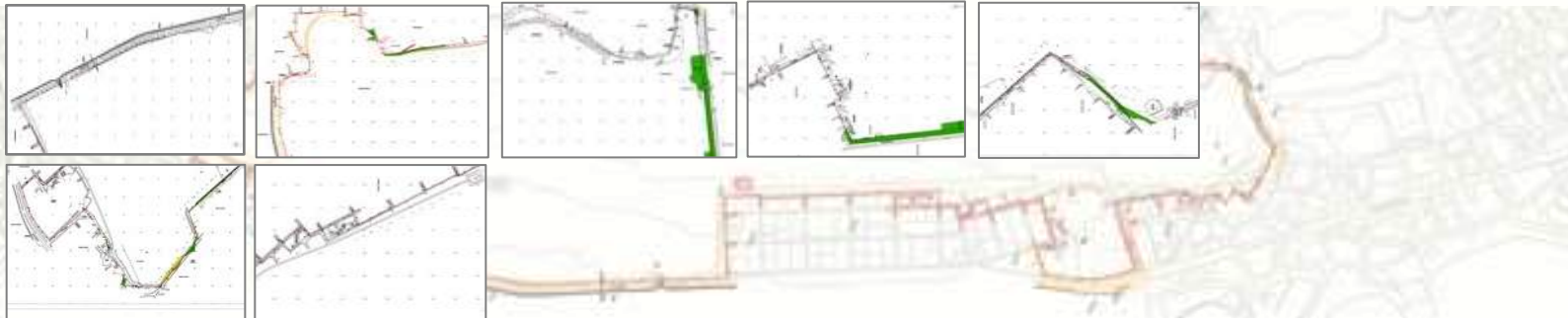
For the proper completion of the expression of interest are needed:

1. Evaluation of all Existing Uses

2. Topographic Survey in detail

3. Definition of Building Regulations

4. Spatial Mode Implication



Hellinikon SA | role

Since its establishment, the role of Hellinikon SA was the call for **expression of interest**

For the proper completion of the expression of interest are needed:

1. Evaluation of all Existing Uses
2. Topographic Survey in detail
- 3. Definition of Building Regulations**
4. Spatial Mode Implication



Hellinikon SA | role

Since its establishment, the role of Hellinikon SA was the call for **expression of interest**

For the proper completion of the expression of interest are needed:

1. Evaluation of all Existing Uses
2. Topographic Survey in detail
3. Definition of Building Regulations

4. Spatial Mode Implication

The need for a spatial model implies:

- **analysis of the proposed uses of previous masterplans**
- scale understanding
- layout of land uses
- investigation of proximities
- investigation of capacities
- development opportunities
- quantification of information
- phasing
- sustainability analysis



Hellinikon SA | role

Since its establishment, the role of Hellinikon SA was the call for **expression of interest**

For the proper completion of the expression of interest are needed:

1. Evaluation of all Existing Uses
2. Topographic Survey in detail
3. Definition of Building Regulations

4. Spatial Mode Implication

The need for a spatial model implies:

- analysis of the proposed uses of previous masterplans
- **scale understanding**
- layout of land uses
- investigation of proximities
- investigation of capacities
- development opportunities
- quantification of information
- phasing
- sustainability analysis



Hellinikon SA | role

Since its establishment, the role of Hellinikon SA was the call for **expression of interest**

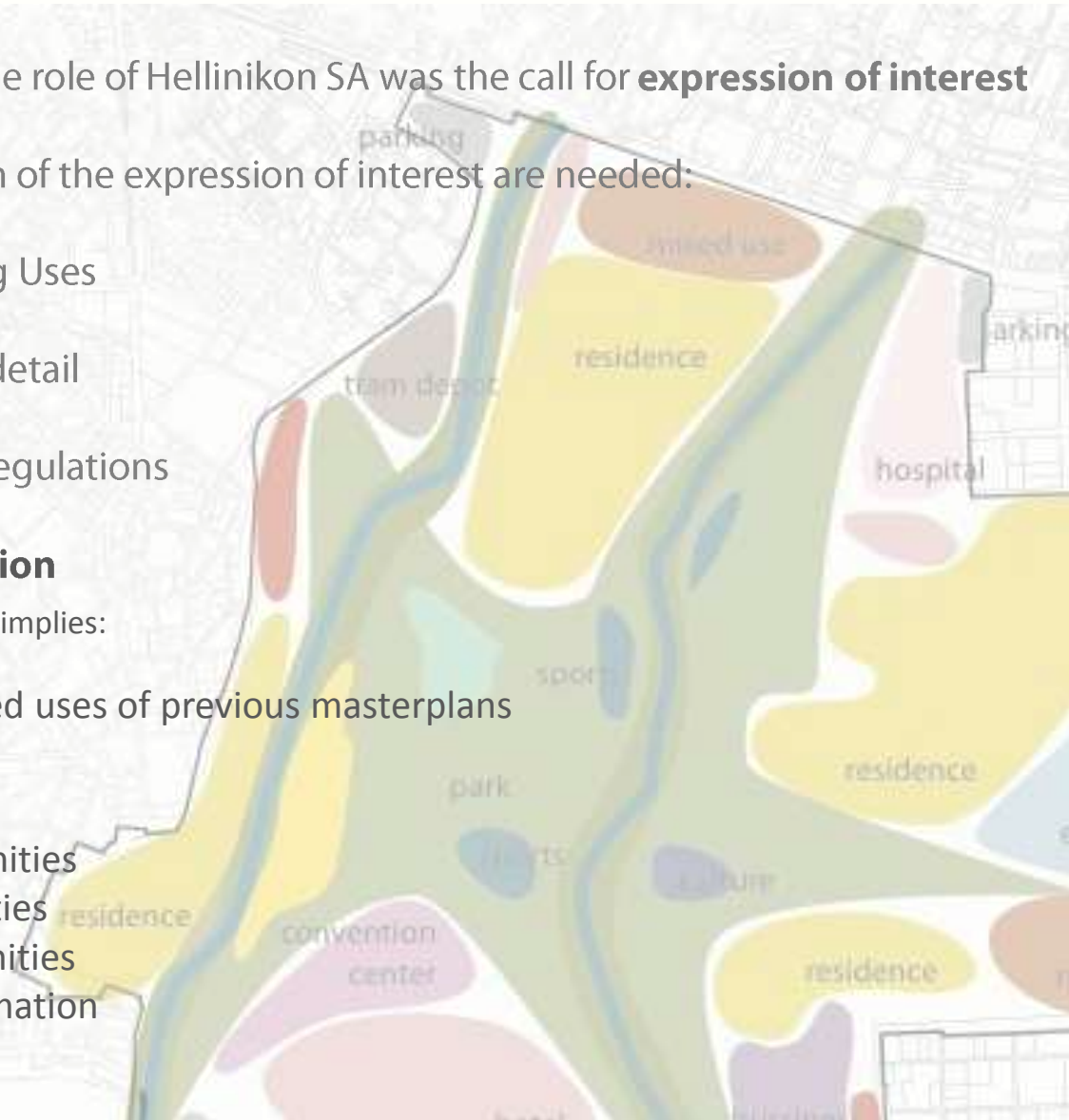
For the proper completion of the expression of interest are needed:

1. Evaluation of all Existing Uses
2. Topographic Survey in detail
3. Definition of Building Regulations

4. Spatial Mode Implication

The need for a spatial model implies:

- analysis of the proposed uses of previous masterplans
- scale understanding
- **layout of land uses**
- investigation of proximities
- investigation of capacities
- development opportunities
- quantification of information
- phasing
- sustainability analysis



Hellinikon SA | role

Since its establishment, the role of Hellinikon SA was the call for **expression of interest**

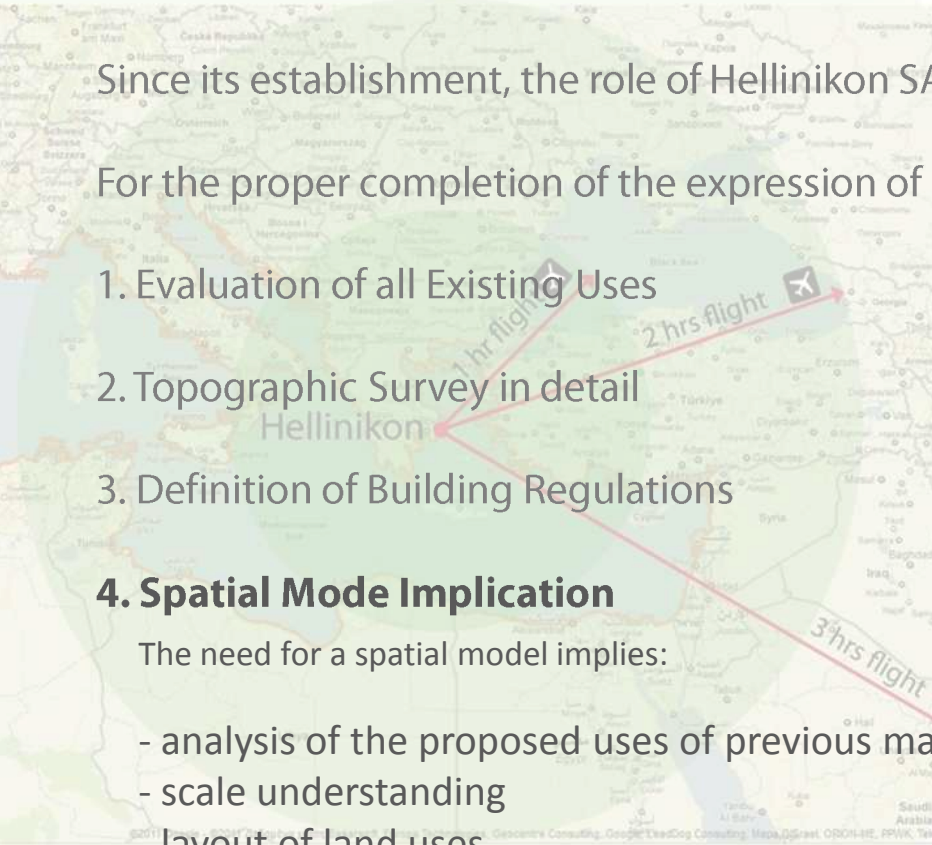
For the proper completion of the expression of interest are needed:

1. Evaluation of all Existing Uses
2. Topographic Survey in detail
3. Definition of Building Regulations

4. Spatial Mode Implication

The need for a spatial model implies:

- analysis of the proposed uses of previous masterplans
- scale understanding
- layout of land uses
- **investigation of proximities**
- investigation of capacities
- development opportunities
- quantification of information
- phasing
- sustainability analysis



Hellinikon SA | role

Since its establishment, the role of Hellinikon SA was the call for **expression of interest**

For the proper completion of the expression of interest are needed:

1. Evaluation of all Existing Uses
2. Topographic Survey in detail
3. Definition of Building Regulations

4. Spatial Mode Implication

The need for a spatial model implies:

- analysis of the proposed uses of previous masterplans
- scale understanding
- layout of land uses
- investigation of proximities
- **investigation of capacities**
- development opportunities
- quantification of information
- phasing
- sustainability analysis



Hellinikon SA | role

Since its establishment, the role of Hellinikon SA was the call for **expression of interest**

For the proper completion of the expression of interest are needed:

1. Evaluation of all Existing Uses
2. Topographic Survey in detail
3. Definition of Building Regulations

4. Spatial Mode Implication

The need for a spatial model implies:

- analysis of the proposed uses of previous masterplans
- scale understanding
- layout of land uses
- investigation of proximities
- investigation of capacities
- **development opportunities**
- quantification of information
- phasing
- sustainability analysis

business

commerce

amenities

hospital

park

reside



Hellinikon SA | role

Since its establishment, the role of Hellinikon SA was the call for **expression of interest**

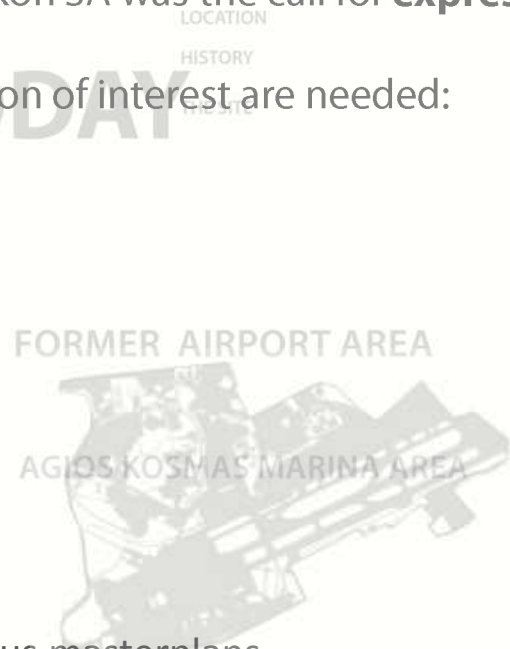
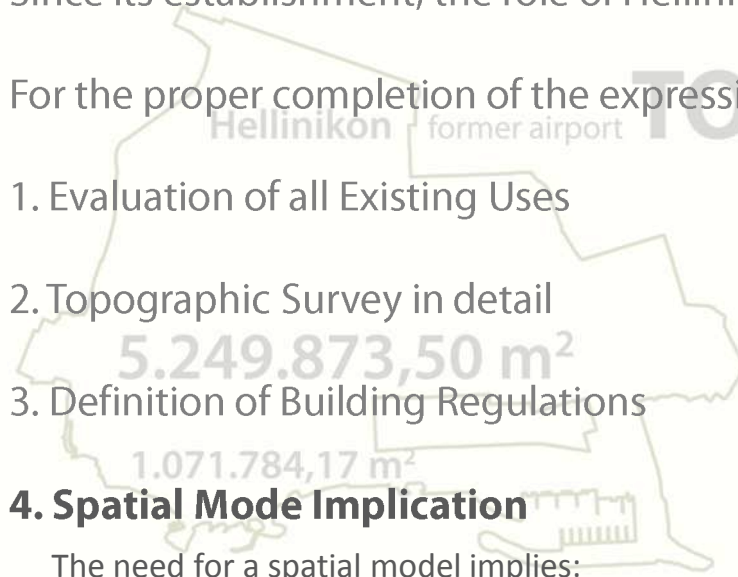
For the proper completion of the expression of interest are needed:

1. Evaluation of all Existing Uses
2. Topographic Survey in detail
3. Definition of Building Regulations

4. Spatial Mode Implication

The need for a spatial model implies:

- analysis of the proposed uses of previous masterplans
- scale understanding
- layout of land uses
- investigation of proximities
- investigation of capacities
- development opportunities
- **quantification of information**
- phasing
- sustainability analysis



paved area 67%

unpaved area 33%



Hellinikon SA | role

Since its establishment, the role of Hellinikon SA was the call for **expression of interest**

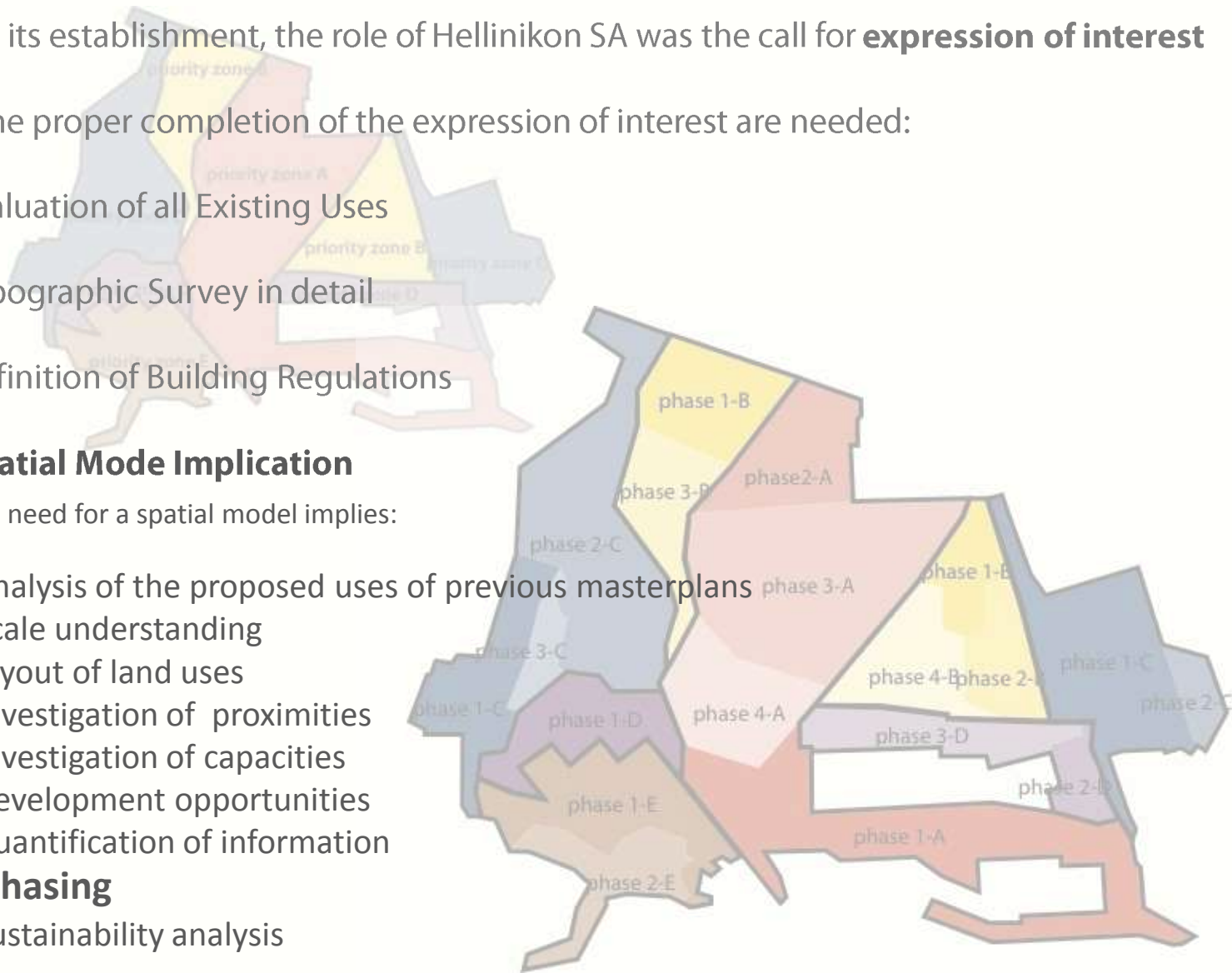
For the proper completion of the expression of interest are needed:

1. Evaluation of all Existing Uses
2. Topographic Survey in detail
3. Definition of Building Regulations

4. Spatial Mode Implication

The need for a spatial model implies:

- analysis of the proposed uses of previous masterplans
- scale understanding
- layout of land uses
- investigation of proximities
- investigation of capacities
- development opportunities
- quantification of information
- **phasing**
- sustainability analysis



Hellinikon SA | role

Since its establishment, the role of Hellinikon SA was the call for **expression of interest**

For the proper completion of the expression of interest are needed:

1. Evaluation of all Existing Uses
2. Topographic Survey in detail
3. Definition of Building Regulations

4. Spatial Mode Implication

The need for a spatial model implies:

- analysis of the proposed uses of previous masterplans
- scale understanding
- layout of land uses
- investigation of proximities
- investigation of capacities
- development opportunities
- quantification of information
- phasing
- **sustainability analysis**

